

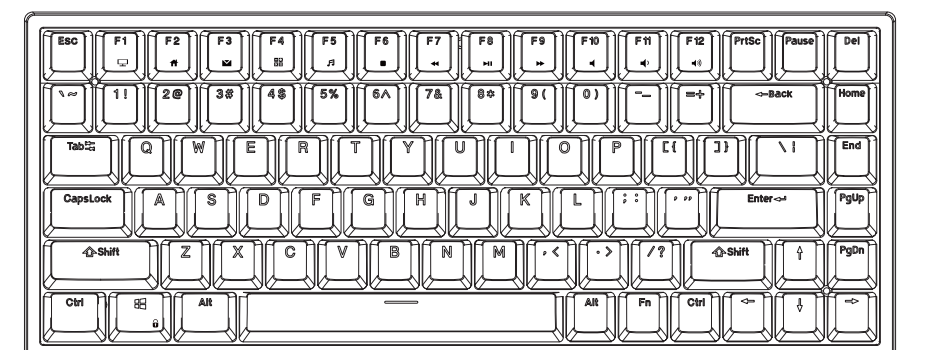


USER MANUAL

Mechanical Wireless Keyboard

166-85701-07

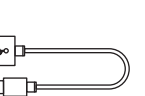
PRODUCT BASIC



Keyboard



Pair Magnet Stands

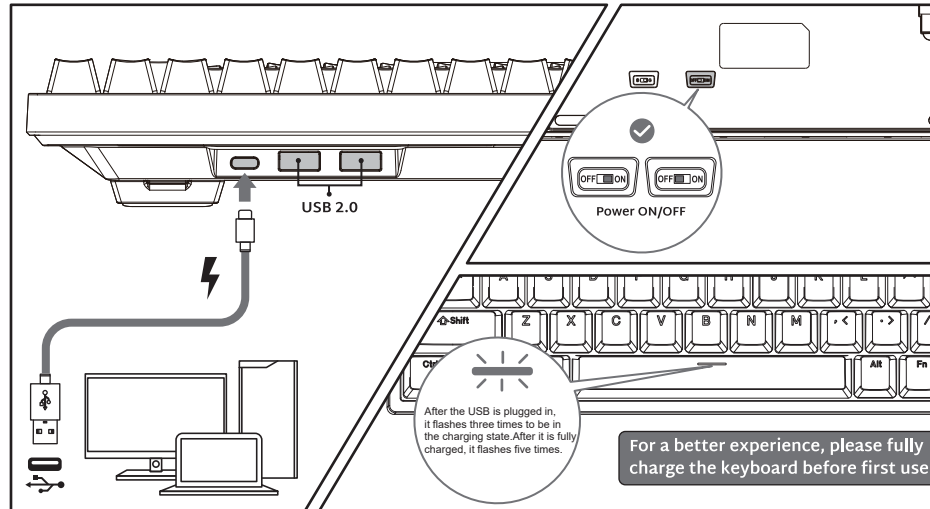


Type-C Cable



User Manual

WIRED MODE & CHARGING

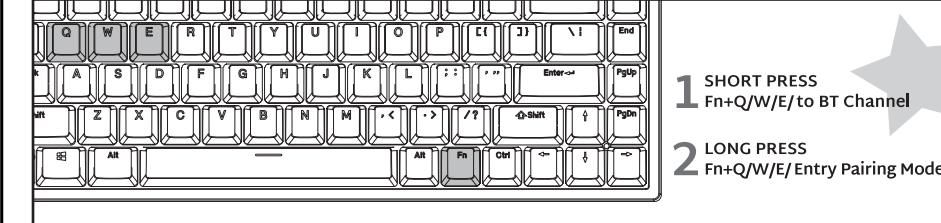
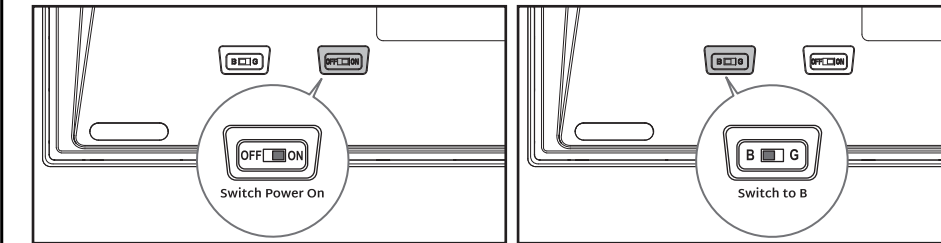


After the USB is plugged in, it flashes three times to be in the charging state. After it's fully charged, it flashes five times.

For a better experience, please fully charge the keyboard before first use.

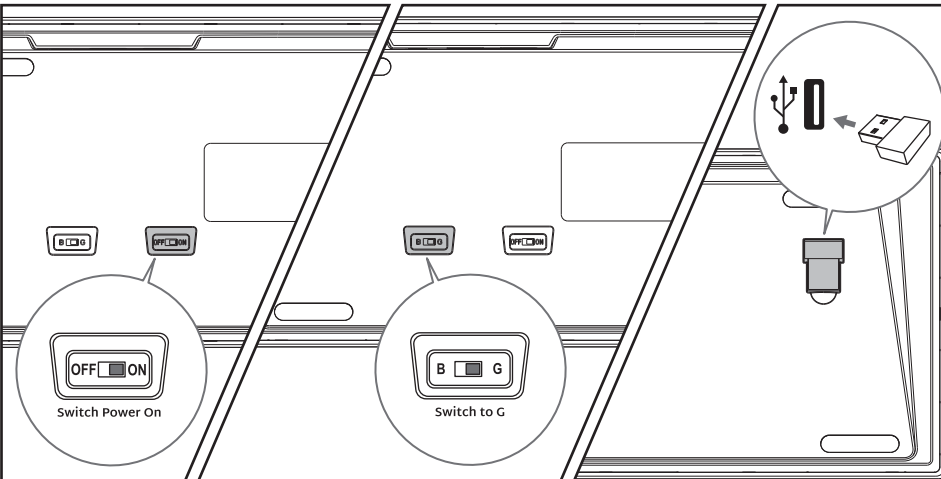
HOW TO USE

BT Connection



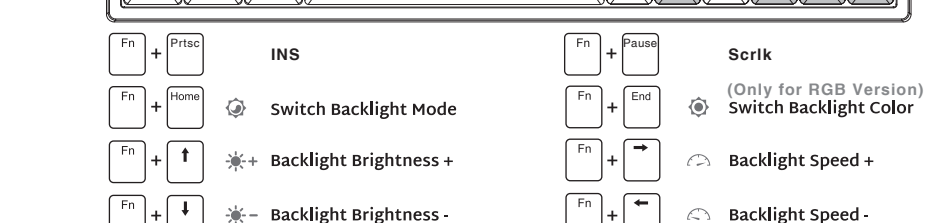
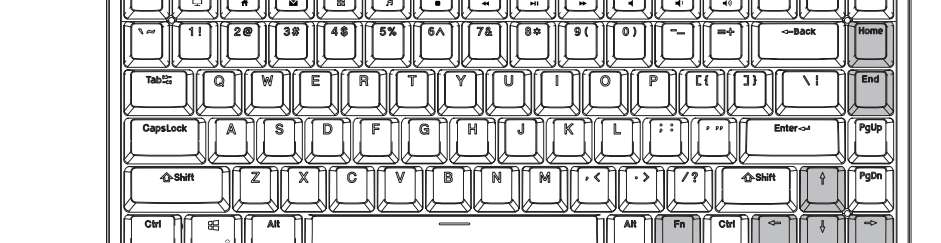
HOW TO USE

2.4Ghz



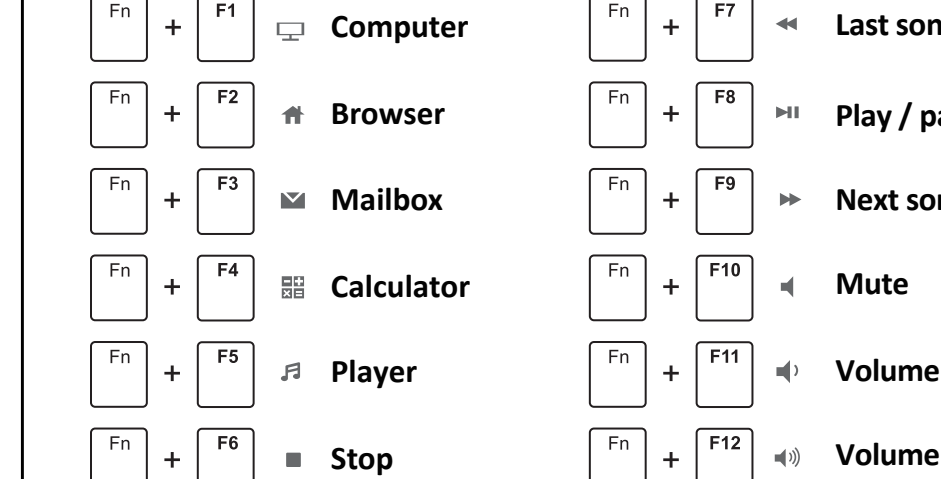
BACKLIGHT CONTROL

INS



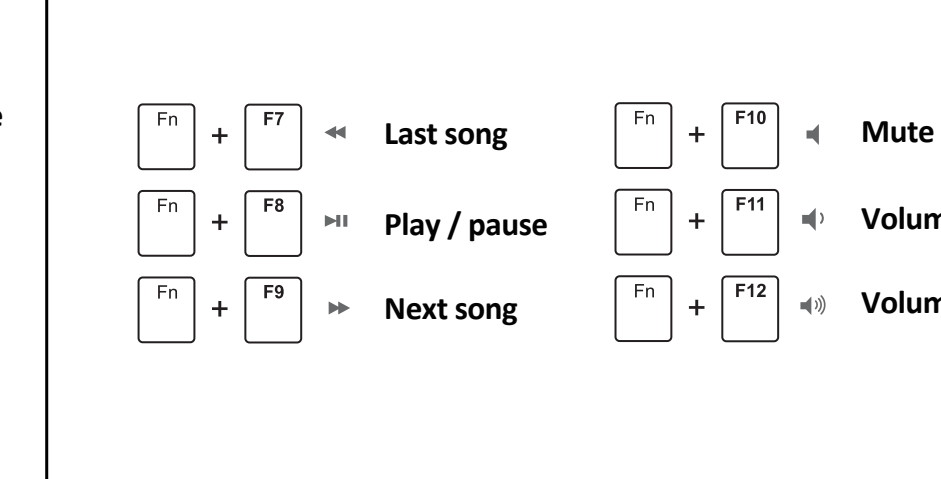
MULTIMEDIA KEY FOR WINDOWS

In Windows mode(FN + A: switch to Windows system)



MULTIMEDIA KEY FOR MAC

MAC system(FN + s: switch to MAC system)



SYSTEM REQUIREMENTS

BT Mode

- Device With Bluetooth 3.0 or later
- PC: Windows 7 or Later
- Mac: macOS X 10.6 Snow Leopard or Later
- iOS: All iPads/iPhone 5 or Later
- Android: 5.0 Lollipop or Later

Wired/2.4Ghz Mode

- Computer With Available USB port
- PC: Windows 7 or Later
- Mac: macOS X 10.6 Snow Leopard or Later

In wireless state, the backlight will not be operated for 5 minutes to sleep. In wired mode, the backlight goes into sleep after 5 minutes without operation

Have an issue with one of our RK products?

Feel free to contact us with any product issues or questions. We will reply as quickly as possible to ensure all your needs are handled. Please contact the seller



WIRELESS TIMELESS ENDLESS